

## Firmware CON\_V1.22.1.8596 Release Notes

This document contains late-breaking product information, updates, and troubleshooting tips not covered in the IRIS-Net documentation.

The firmware can only be used with IRIS-Net v4.1.0. Please copy the attached firmware file into the relevant firmware folders:

PAVIRO: ..\IRIS-Net\V4.1.0\Firmware\PAVIRO

PROMATRIX 6000: ..\IRIS-Net\V4.1.0\Firmware\PM6000

PROMATRIX 8000: ..\IRIS-Net\V4.1.0\Firmware\DPM8016

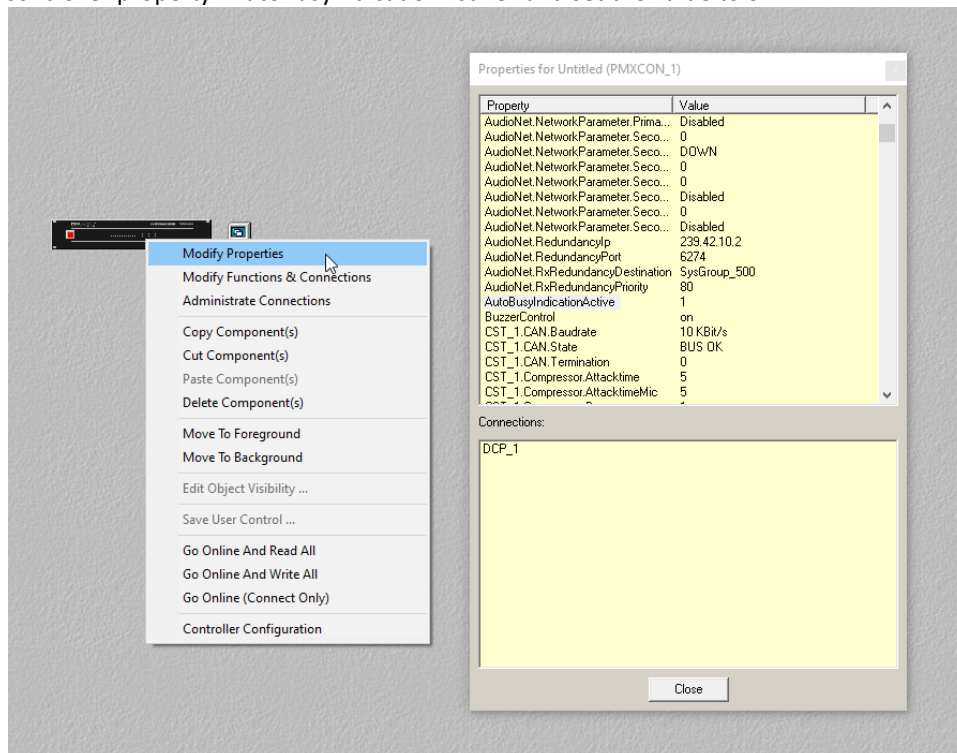
### What's new

#### Firmware V1.22.1.8596 includes the following new features, bug fixes and enhancements

- The application firewall being present on the system is now fixed to allow access to the device from the same subnet outside of the following ranges: 10.0.0.0/8, 172.16.0.0/12, 192.168.0.0/16, 127.0.0.0/8, 169.254.0.0/16
- Open Source licenses are retrievable at [http://\[ip-of-device\]:8080](http://[ip-of-device]:8080), if prompted for username / password enter username "webserver" and the "WEB AND EXTERNAL TOOL ACCESS PASSWORD" configured in IRIS-Net (Controller-Configuration / Security). The default password is "4444"

#### Known Issues

- The feature auto busy indication affects the user experience of the call station by slowing down certain operations. Ideally, you disable the feature by default. To disable the feature, modify the controller property "AutoBusyIndicationActive" and set the value to 0.



---

New Firmware Version:

- CON\_V1.22.1.8596.pkg

**NOTE: Firmware updates of PROMATRIX 8000, PROMATRIX 6000 or PAVIRO devices are password protected. The default password is: 0000. Changing IP address of Controller / DPM 8016 requires the following credentials. User: admin; Password: 0000**